



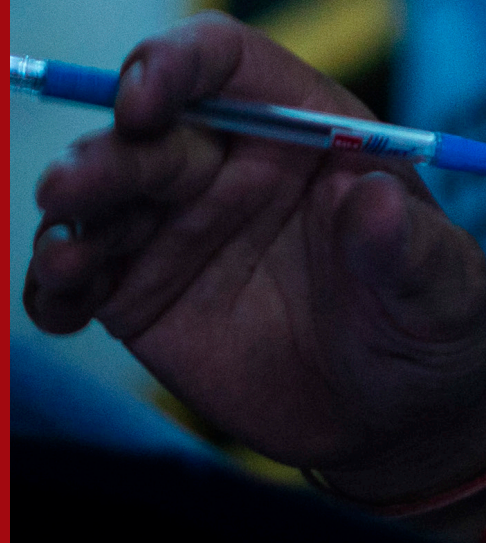
BUILDING TOMORROW, TODAY

Engineering Solutions for
a Sustainable Future

● Our story, in these pages

Message from our MD	04
Our Story & Footprints	06
Our Journey	08
Our Company at a Glance	10
<i>We are known for excellence in</i> Our Business Verticals	14
Manufacturing	15
Industrial Projects	29
Saraswati Sugar Mills Ltd.	37
Environment, Social, Governance	40
<i>The initiatives that keep us inspired</i> Corporate Social Responsibility	44
Our Joint Ventures & Subsidiaries	46
Sectors we Cater to	50

**Driving
innovation led
growth across
the globe.**





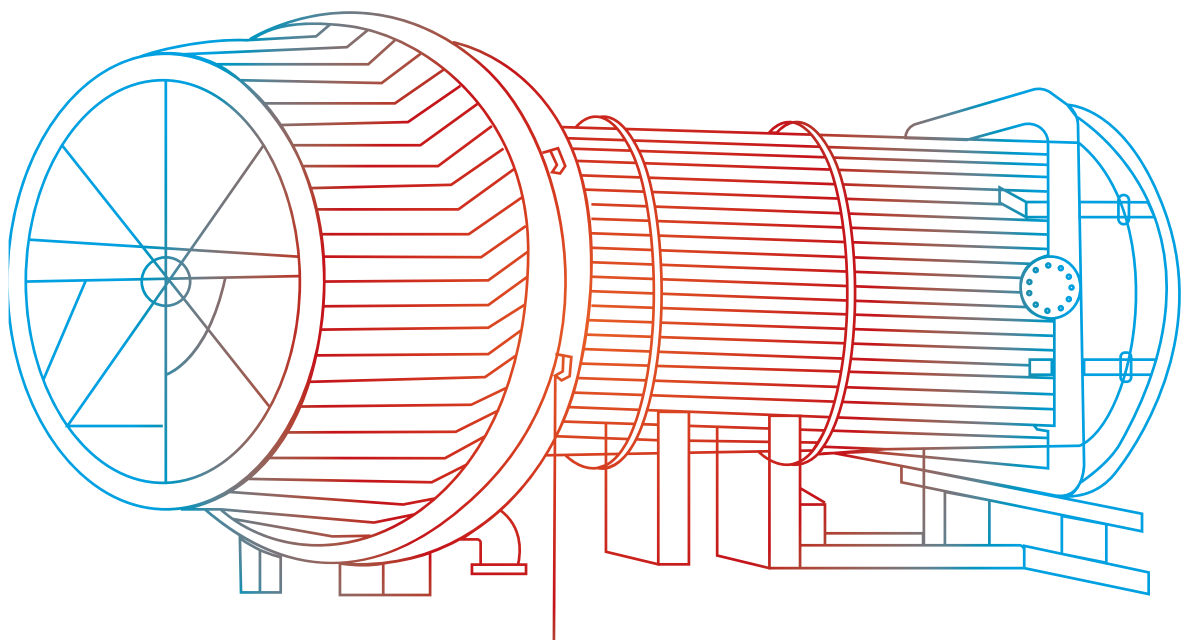
- **We are committed to providing sustainable solutions using our technology for products & services.**

Isgec has made remarkable progress over 90 years, evolving from a sugar mill into a thriving engineering conglomerate.

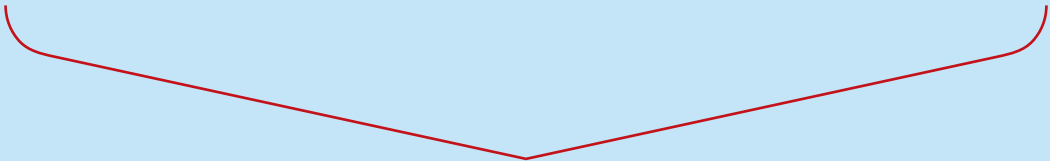
Our unwavering dedication to excellence is evident in the diverse and sophisticated equipment we supply, as well as the successful execution of complex projects across the globe.

Our future growth will be based on innovation, fostering employee development, and environmental stewardship, which are all essential components for achieving the next milestone in our journey.

Aditya Puri
Managing Director



Sustainability is the core of
our growth plans—
we work for a greener
tomorrow, today.



● Our Story & Footprints

Isgec Heavy Engineering Limited, which started as a bold venture in 1933 as Saraswati Sugar Mills Ltd., is today a global leader in Manufacturing, Industrial Projects, and Sugar.

A lot has changed over these past ninety years. Our research and development excellence has made us a critical link in the supply chain of decarbonisation, including green ammonia, green hydrogen, solar panels, emission controls including SO_x, NO_x, ethanol production, steam reduction, incineration and waste to energy boilers, and methanisation etc. Along with our portfolio, the size of our company has also multiplied—a turnover of INR 6,000+ crores, 8 plants, and clients across 92 countries.

What has however remained unchanged over the last nine decades, is the integrity of our management, our environmentally conscious decision-making, maintaining a safe working environment for our employees, our commitment to give back to the communities around us, and holding the highest regard for our colleagues who have been the building blocks of our success.

Manufacturing Plant in

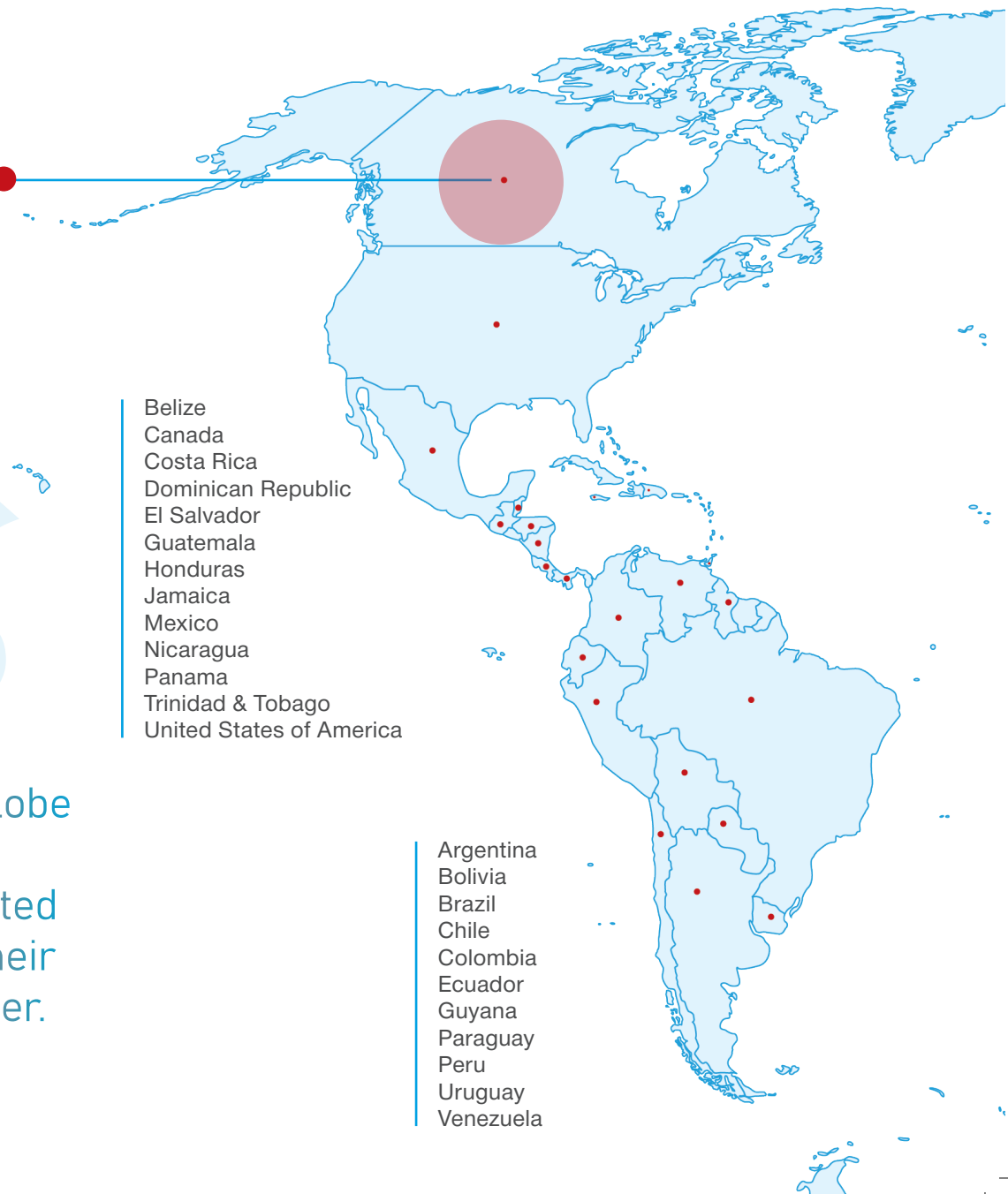
Windsor, Canada
Eagle Press & Equipment Co. Ltd.

“

Customers around the globe have, time & again, entrusted Isgec to be their growth partner.

Belize
Canada
Costa Rica
Dominican Republic
El Salvador
Guatemala
Honduras
Jamaica
Mexico
Nicaragua
Panama
Trinidad & Tobago
United States of America

Argentina
Bolivia
Brazil
Chile
Colombia
Ecuador
Guyana
Paraguay
Peru
Uruguay
Venezuela



Noida, Uttar Pradesh - Head Office

Industrial Projects:

Boilers, Power Plants, Sugar Plants, Bioenergy (Distilleries and Compressed Biogas), Emission Control Solutions, Material Handling, Railway Projects, Process Plants

Manufacturing Plants:

Yamunanagar, Haryana

Presses, Process Plant Equipment, Iron Castings, Liquified Gas Containers, Prefabricated Piping Spools, Contract Manufacturing

Rattangarh, Haryana

Boilers, Pressure Parts, Process Skids & Modules, Prefabricated Piping Spools

Bawal, Haryana

Standard Mechanical Presses, Press Brakes

Muzaffarnagar, Uttar Pradesh

Steel Castings

Dahej, Gujarat

Process Plant Equipment, Material Handling Equipment

Sugar Plant & Distillery

Yamunanagar, Haryana

Saraswati Sugar Mills Ltd.

Distillery in

Cavite, Philippines

Cavite Biofuel Producers Inc.

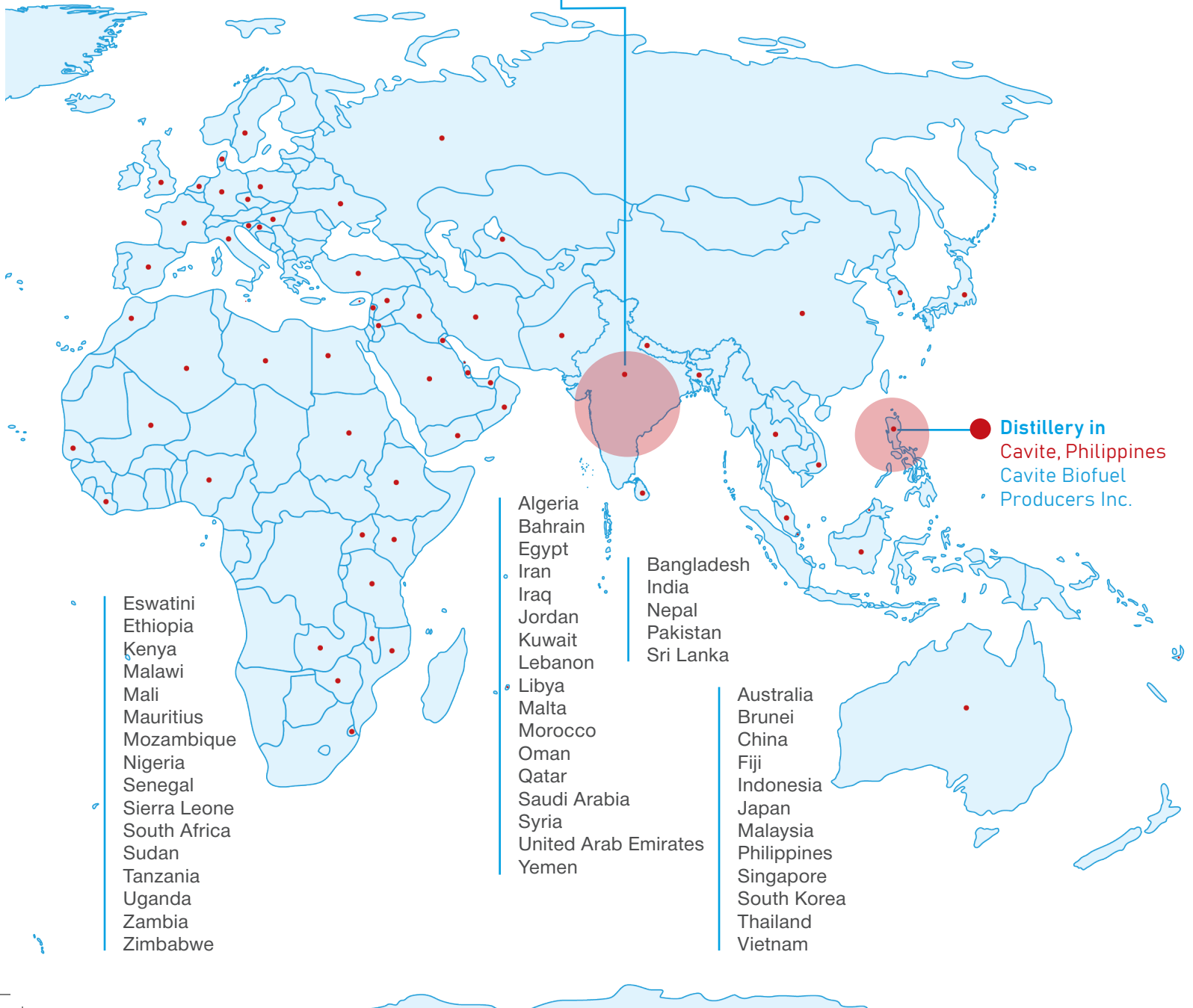
Croatia
Cyprus
Czech Republic
Denmark
France
Germany
Hungary
Italy
Poland
Russia
Slovenia
Spain
Sweden
The Netherlands
Turkey
Ukraine
United Kingdom
Uzbekistan

Algeria
Bahrain
Egypt
Iran
Iraq
Jordan
Kuwait
Lebanon
Libya
Malta
Morocco
Oman
Qatar
Saudi Arabia
Syria
United Arab Emirates
Yemen

Bangladesh
India
Nepal
Pakistan
Sri Lanka

Australia
Brunei
China
Fiji
Indonesia
Japan
Malaysia
Philippines
Singapore
South Korea
Thailand
Vietnam

Eswatini
Ethiopia
Kenya
Malawi
Mali
Mauritius
Mozambique
Nigeria
Senegal
Sierra Leone
South Africa
Sudan
Tanzania
Uganda
Zambia
Zimbabwe



● Our Journey



1933

- Isgec, then known as Saraswati Sugar Syndicate Limited, was started as a sugar mill with a crushing capacity of 400 tons per day.

1946

- Started manufacturing engineering goods.

1965

- Isgec John Thompson Ltd. (IJT) was established for industrial boilers.

1977

- Listed on the Delhi Stock Exchange.

1981

- Isgec acquired a steel castings unit in Muzaffarnagar, Uttar Pradesh.

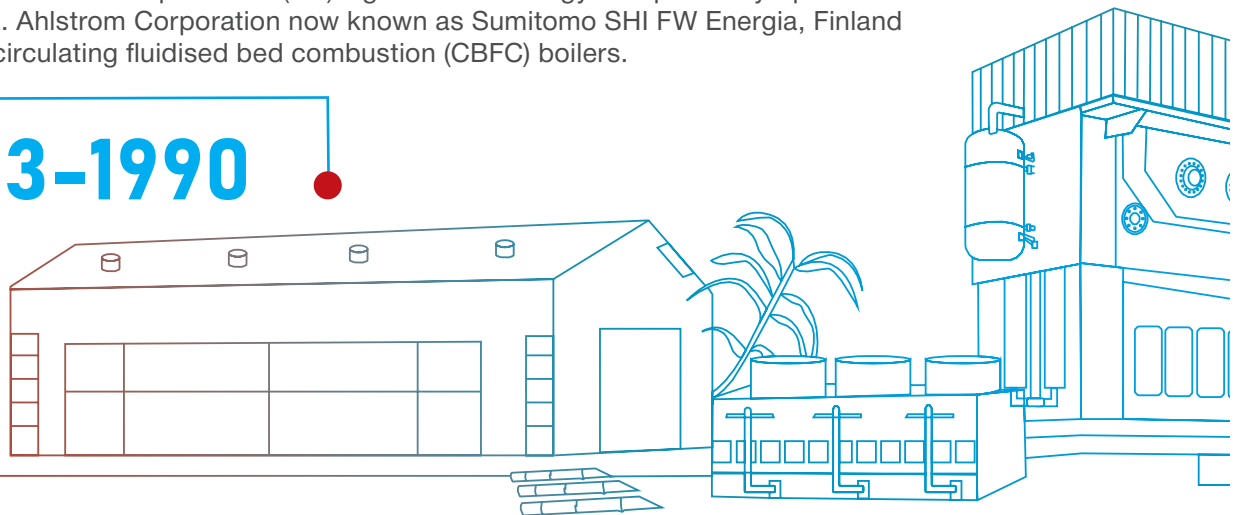
1985

- Entered into a technology transfer agreement with Rovetta Presse Spa, Italy for manufacturing mechanical presses.

1988

- Isgec John Thompson Ltd. (IJT) signed a technology tie-up with Pyropower of A. Ahlstrom Corporation now known as Sumitomo SHI FW Energia, Finland for circulating fluidised bed combustion (CBFC) boilers.

1933-1990



1991-2009

1998

- Licensing agreement with Belleli, Italy to manufacture high pressure reactors for oil refineries.

2007

- Group turnover crossed INR 1,000 crores (USD 230 million).

2008

- Listed on the Bombay Stock Exchange.
- Set up plant for manufacturing large process equipment in Dahej, Gujarat.

2009

- Plant was founded to manufacture standard presses and press brakes in Bawal, Haryana.
- Group turnover crossed INR 2,000 crore (USD 393 million).



2010

- Licensing agreement for pulverised coal boilers with BHI FW Corporation, USA.

2012

- Joint venture with Hitachi Zosen, Japan, to manufacture critical process equipment.
- Group turnover crossed 3,000 crore (USD 586 million).

2013

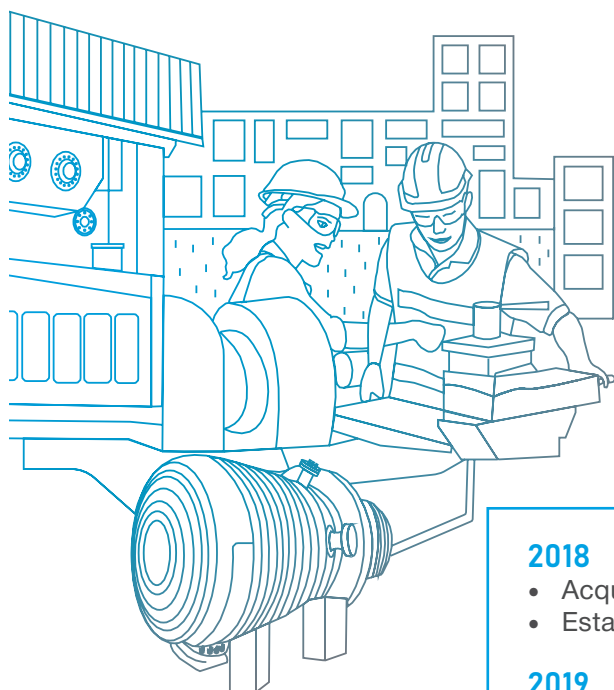
- Licensing agreement for heat recovery steam generators (HRSG) with NEM Energy b.v., Netherlands.

2015

- Joint venture with Amec Foster Wheeler North America Corporation, USA, now known as SHI FW Energia, Finland for proposals and detailed engineering of boilers.
- Joint venture with Titan Metal Fabricators, USA for manufacturing process equipment using reactive metals and high nickel alloys.

2017

- Joint venture with Redecam, Italy for providing SOx and particulate matter emission control solutions.

2010-2017**2018-2024****2018**

- Acquired 100% stake in Eagle Press & Equipment Co. Ltd., Canada.
- Established material handling workshop in Dahej, Gujarat.

2019

- Acquired a 130 KLPD distillery Cavite Biofuel Producers Inc. in the Philippines.

2020

- Group turnover crossed INR 5,000 crore (USD 663 million).

2021

- Listed on the National Stock Exchange.
- Commissioned 160 KLPD ethanol plant in Saraswati Sugar Mills Ltd. (subsidiary), Yamunanagar, Haryana.

2023

- Saraswati Sugar Mills Ltd. (subsidiary), Yamunanagar converted from double sulphitation to refinery producing I.U < 20 European Union standard I sugar.

● Our Company at a Glance

Evolving, Expanding, & Engineering
the Future

91+ years
of excellence

4,500+

employees across
India and overseas



INR 6,245 Cr.

(USD 749 Million)
consolidated revenue
(FY 2023-24)

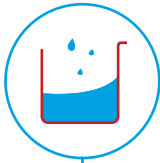


8 plants

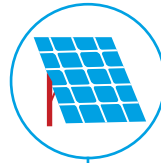
across the world

194

million litres of water
harvested (FY 2023- 24)

**2,647**

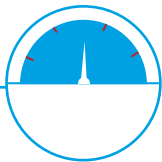
tons of coal usage
neutralised (FY 2023-24)

**294**

Fortune India 500 rating
(year 2023)

**298**

Economic Times 500 rating
(year 2023)

**ICRA A1+**
ICRA AA

(Stable) Credit Rating


**4**

joint ventures
with global partners

“

Isgec is poised
to grow both
technologically &
in volumes in our
existing lines of
businesses,
services & exports.



A person wearing a white lab coat is holding a large architectural blueprint. The background is a blurred laboratory or office setting with blue lighting. A red vertical bar is on the right side of the image. A red bracket is positioned below the text.

Isgec recognises that the
credit for its success in
the past & the company's
future lies in the hands
of its employees.

Our Business Verticals

- **Manufacturing**
- **Industrial Projects**
- **Saraswati Sugar Mills Ltd. (SSM)**

01



Manufacturing

Isgec's manufacturing is a chapter in Make in India's success story. For the past seventy-eight years, Isgec has manufactured world-class equipment at competitive costs and delivery times. Our six state-of-the-art manufacturing facilities, spanning over 200,000 sqm of covered production area, are strategically located in Yamunanagar, Rattangarh, Muzaffarnagar, Dahej, Bawal, and Windsor (Canada).


02



Industrial Projects

Isgec is among India's top total solution providers for project execution, taking single-point responsibility from concept to commissioning. We bolster our exceptional engineering team with data-centric procurement processes and rigorous on-site monitoring, ensuring the delivery of high-quality, cost-effective solutions to our clients. Our offerings include integrated IIoT platforms, AI modules, operation and maintenance services, retrofits, and spares.

03



Saraswati Sugar Mills Ltd. (SSM)

Established in 1933, Saraswati Sugar Mills Ltd. (SSM) is a leading player in the Indian sugar industry, with a 10,000 TCD crushing capacity and a 160 KLPD distillery. We are renowned for our consistent product quality and commitment to sustainable operations and workplace safety.

01

Manufacturing

Pg. 16

Presses & Press Brakes

Pg. 18

Process Equipment

Pg. 22

Castings

- Steel
- Iron

Pg. 24

Liquified Gas Containers

Pg. 25

Boiler Pressure Parts

Pg. 26

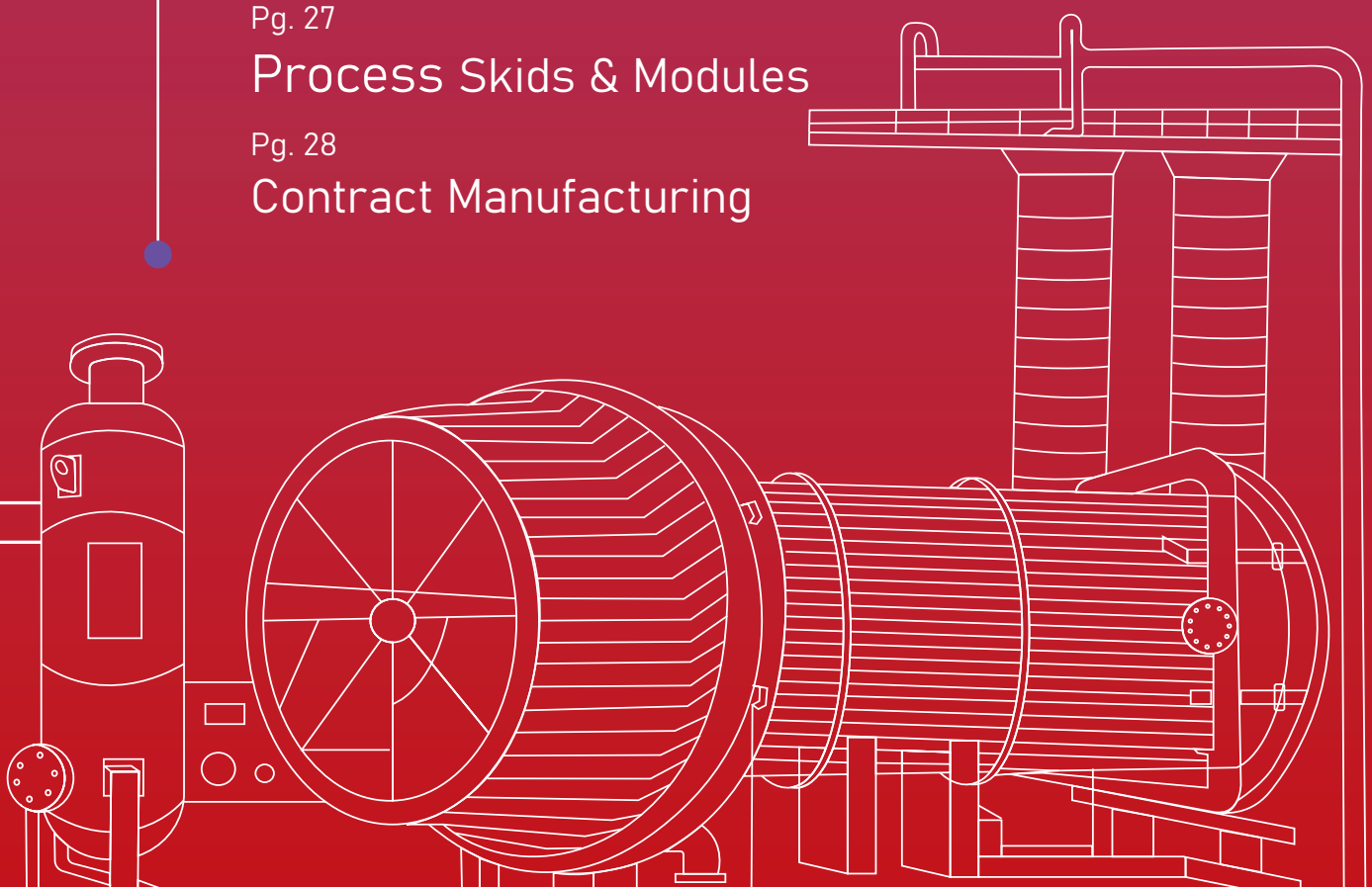
Prefabricated Piping Spools

Pg. 27

Process Skids & Modules

Pg. 28

Contract Manufacturing



Presses

Isgec is leading supplier of mechanical, hydraulic and servo presses, delivering credible solutions for various industries. With over 55 years of experience, we've pioneered high-quality, innovative press solutions ranging from 63 T to 15,000 T worldwide.

Committed to excellence, we strictly adhere to JIS and DIN Standards for press accuracy, guaranteeing that our products meet the highest industry benchmarks. Our solutions comply with international safety standards such as CE, OSHA, and country-specific requirements, ensuring the safety and reliability of our products. Isgec integrates advanced robotic and transfer technologies offering comprehensive turnkey solutions.

Additionally, Isgec offers Isgec ACTS (Automated Component Transfer System), a 2-axes & 3-axes Electronic Servo Transfer System. We also offer Industry 4.0 advancements with Isgec REACH (Remote Enabled Access & Cloud Hub), optimising manufacturing processes through smart technologies.



Eagle Press & Equipment Co Ltd. based in Windsor, Canada, is a subsidiary of Isgec Group that engineers and manufactures mechanical, hydraulic and servo presses catering to the North American market.



Transfer Press Lines.



Servo Press Line.

Key products

Press Solutions (Mechanical, Hydraulic & Servo)

- Tandem Press Lines
- Transfer Press Lines
- Progressive Die Press Lines
- Blanking Press Lines
- High-Speed Mechanical Presses
- Deep Draw Hydraulic Presses
- High-Speed Hydraulic Presses
- Hot Forming Press Lines
- Tryout Mechanical Presses
- Die Spotting/Tryout Hydraulic Presses
- Refractory Press Solutions
- Hot/Cold Forging Presses
- Special Application Presses

Industries we cater to

- Automotive: OEMs, Tier-1 & Tier-2
- White Goods
- Brown Goods
- Powder Compaction
- Railways
- Defense
- Aerospace
- Shipyard
- Construction
- Nuclear



We have supplied 5,500+ presses, including 100+ transfer presses & 90+ tandem press lines across 26 countries.

Standard Mechanical Presses & Press Brakes

Key products

- Gap Frame Mechanical Presses
 - Link Motion
 - Single Suspension
 - Double Suspension
- Ring Frame Mechanical Presses
- H-Frame Mechanical Presses
 - Single Suspension
 - Double Suspension
- CNC Hydraulic Press Brakes

Industries we cater to

- Automotive
- White Goods
- Railways, Defense, Aerospace
- Agriculture Equipment
- Medical Equipment
- Furniture, Industrial Doors
- Telecommunication
- Earthmoving/Construction Equipment
- Elevator Industry
- Heat Ventilation & Air Conditioning
- Electrical Panel Industry
- Petrochemical

Isgec Bawal is a leading manufacturer and supplier of standard gap and monolithic frame mechanical power presses ranging from 40 T to 630 T and CNC hydraulic press brakes ranging from 40 T to 800 T, catering to the sheet metal forming and bending industry globally.

Our mechanical power presses and CNC hydraulic press brakes are designed with the highest level of rigidity, precision, and reliability. We ensure they meet international accuracy and safety standards and are accredited by both CE and OSHA.



Hydraulic Press Brake.



Battery of Gap Frame One-point and Two-point Presses.



Robotic automation for Standard Mechanical Press.



Did you know?

We have supplied 2,500+ high-quality precision power presses and hydraulic press brakes worldwide for major OEMs, MNCs, & their tier-1 & tier-2 manufacturers in the sheet metal forming & bending industry.

● Process Equipment

Isgec's process equipment division in Yamunanagar excels in designing, engineering, manufacturing, testing, and supplying critical process equipment.

We collaborate with world-renowned licensors to offer a comprehensive range of products, including screw plug heat exchangers and process gas waste heat boilers licensed by Thermal Engineering International, high-pressure/low-pressure feedwater heaters and surface condensers with Foster Wheeler USA, and helix heat exchangers with the technical backing of Lummus.

We supply our exchangers in a range of metallurgies—nickel alloys (monel, inconel), stainless steel (including duplex and super duplex), low alloy steels, and carbon steel and are capable of manufacturing equipment for polysilicon and other new energy projects using high nickel alloys such as incoloy 800 H.



Medium Pressure Decomposer with three tube sheets for a urea plant.



Over 18,000 radiography quality inner bore welds executed first time right in three proprietary Heat Exchangers.



Breech Lock Heat Exchanger for hydro processing units of oil refinery with tube side pressure up to 199 bar.

Key products

- Shell & Tube Heat Exchanger (including Screw Plug Type, Helical Type & HP Feed Water Heaters)
- Reactor & High Pressure Separator
- Process Gas Waste Heat Boiler
- High Pressure Boiler Steam Drum
- Site Fabricated Equipment
- Distillation Columns

Industries we cater to

- Green Hydrogen
- Polysilicon
- Oil & Gas Processing
- Refinery & Petrochemical
- Fertiliser
- LNG Liquefaction & Regasification
- Green Ammonia
- Thermal Power
- Nuclear Power
- Chemicals



Did you know?

Isgec has supplied heat exchangers with inner bore welding (IBW) of tube-to-tube sheet joints on the backside of tube sheets.

Isgec Hitachi Zosen Limited

Key products

- Hydro-processing Reactors
- Ammonia Converter & Baskets
- HP Urea Equipment (Urea Reactor, Urea Stripper, Carbamate Condenser, Urea Hydrolyzer)
- Waste Heat Boilers & Superheaters
- Tubular Reactors
- Secondary Reformer
- Separators
- Coke Drum
- Reactors for Petrochemicals Plants (PVC, VCM, PTA, GTL, Methanol)
- Distillation Columns
- Large Shell & Tube Heat Exchangers

Industries we cater to

- Oil & Gas Processing
- Refinery & Petrochemical
- Fertiliser
- LNG Liquefaction & Regasification
- Green Ammonia
- Thermal Power
- Steel
- Chemicals

The joint venture between Isgec and Hitachi Zosen Corporation, Japan, has a state-of-the-art plant at Dahej, complete with an RO-RO Jetty to ship out over dimensional cargo (ODC) equipment.

We have secured approvals from major process licensors—Axens, BP, Casale, Chevron Lummus Global, EIL, Exxon Mobil, Foster Wheeler, KBR, ThyssenKrupp, Topsoe, Total, Toyo, and UOP—to manufacture proprietary equipment.

Equipped with cutting-edge manufacturing capabilities and the capacity to handle complex metallurgies—with thicknesses up to 12 inches, diameters up to 14 meters, and weights up to 2,400 MT—we are the global leaders for the supply of critical equipment in the oil & gas, refinery, petrochemical, ammonia, urea, and polysilicon industries.



Large Vacuum Distillation Column of diameter more than 13 m weighing close to 1,000 MT supplied to Thailand.



Vanadium Alloy Steel Reactor for hydroprocessing unit.



Urea Reactor with duplex steel corrosion resistance lining supplied to a fertiliser plant in Bolivia.



Did you know?

IHZL has supplied a reactor weighing 1150 MT, which was 220 mm thick + 7 mm SS 347 weld overlay in vanadium modified chrome moly steels & supplied columns with lengths up to 101 m & diameters up to 13.1 m.

● Isgec Titan Metal Fabricators Pvt. Ltd.

Isgec Titan Metal Fabricators Pvt. Ltd. is a joint venture between Isgec Heavy Engineering Ltd., India and Titan Metal Fabricators, USA. Our expertise lies in custom fabricated corrosion-resistant process equipment in exotic metallurgies that cater to the global demands of chemical, petrochemical, and pharmaceutical companies. We are approved by globally renowned process licensors, including Ineos, KBR and Koch Engineered Solutions (KES), underscoring our commitment to quality and excellence.



Zirconium Heat Exchangers for the chemical industry.



Titanium Exchangers for purified terephthalic acid (PTA) plant.



Niobium Heat Exchanger for an agrochemical plant.

Key products

- Heat Exchangers
 - Shell & Tube
 - Bayonet
- Pressure Vessels
- Reactor/Reactor Internals
- Columns/Towers
- Piping
- Custom Fabrication

Industries we cater to

- Chemicals
 - Fluro-Chemical
 - Agro-Chemicals
 - Fine-Chemicals
 - Nitric Acid
 - Sulphuric Acid
 - Hydrochloric Acid
- Fertilisers
- Refineries
- Acid Concentration/Spent Acid Plants
- Bromine Plants
- Steel Plants
- Pharmaceuticals
- Power

Key metallurgies

- Titanium
- Tantalum
- Niobium
- Zirconium
- Hastelloy
- Inconel
- Monel
- Pure Nickel
- High Nickel Alloys



We have a Class 100,000 clean room facility spanning 1,000 sq m. to manufacture critical equipment in a dust-free environment.



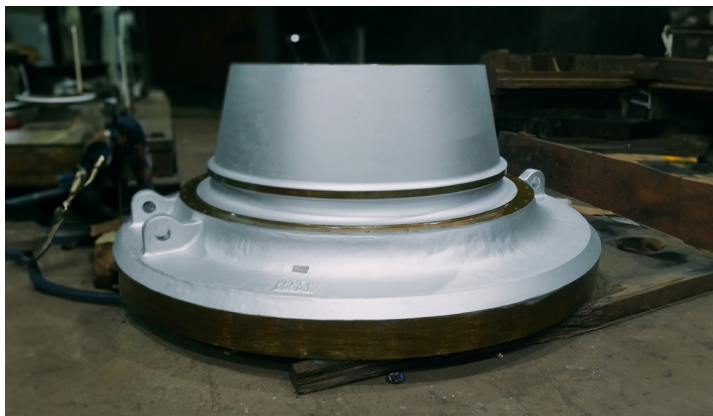
● Castings (Steel)

For the past four decades, Isgec has been the leader in steel casting technologies, exporting nearly half our turnover to markets in the USA, Europe, Canada, and Japan.

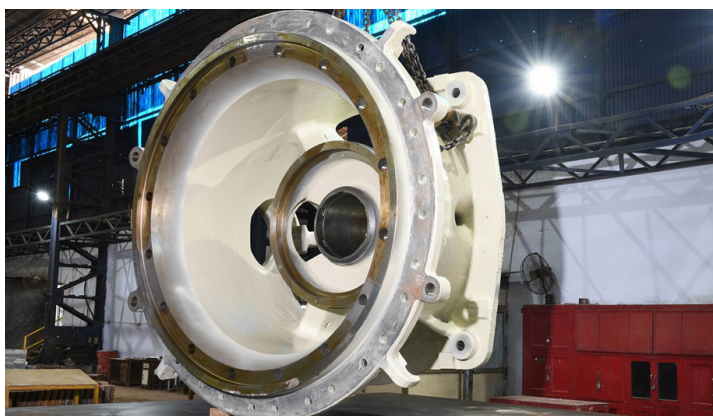
We are unwavering in our commitment to supplying top-quality complex casting solutions for critical applications across various metallurgies, including duplex, super duplex, and low-alloy steel, heat resistant steel, P91, creep steel, stainless steel, and carbon steel. Our comprehensive solutions are backed by rigorous research and development and a skilled workforce, setting new standards globally.



Pelton Runner-Hydro Turbine Castings.



Grinding Table for cement sector.



Main Frame for mining sector.

Key products

- Steam Turbine/Gas Turbine Casings including Single Piece Barrel Type Outer Casing
- Hydro - Crown, Band, Blades, Runners (Pelton & Francis), Guide Vanes, Kaplan Hub & Blades, Spherical Valve Parts (Upstream & Downstream Body, Rotor, Trunnion)
- Cement - Kiln Tyres, Grinding Table, Girth Gear
- Steel - Mill Housing, Chocks, Coiler Drum (HRS)
- Pump Casing, Pump Impeller, Diffuser, Valve Body
- Crusher Main Frame, Mill Head Casting
- Compressor Casing Casting
- General Engineering Steel Castings

Industries we cater to

- Hydro Power/Steam Power/ Gas Power
- Cement & Mining
- Steel Plants including Steel Rolling Mills
- Pumps & Valve Industries (Petroleum & Water Stream)
- Pulp & Paper
- Valve (Oil & Gas)
- Marine



We are one of the only plants in India that has accomplished a single-piece steel casting weighing 70 metric tons.

Castings (Iron)

Key products

- Column & Tower Casting for Soda Ash Plants
- Checker Support Assembly, Choke & Stove Cooler Castings for Steel Sector
- Stamping Dies for Automotive Sector
- Base, Column & Slide for Machine Tool Sector
- Roller Bearing Housings & other Castings for Cement Sector
- Press Roll Shell, Dryer Roll Shell, Sole Plates & End Journal Casting for Paper Industry
- Horizontal, Vertical Pumps & Valves
- Frame & Cylinder Castings for Pump/Compressor Sector
- Body, Guide Vane & Bearing Housing for Centrifugal Compressors
- Ni-Hard, Ni-Resist & Hi-Chrome Castings for Power Sector
- Fusion Pot, Pan Body, Top Covers & Agitator Castings for Dye & Dye Stuff Sector

Industries we cater to

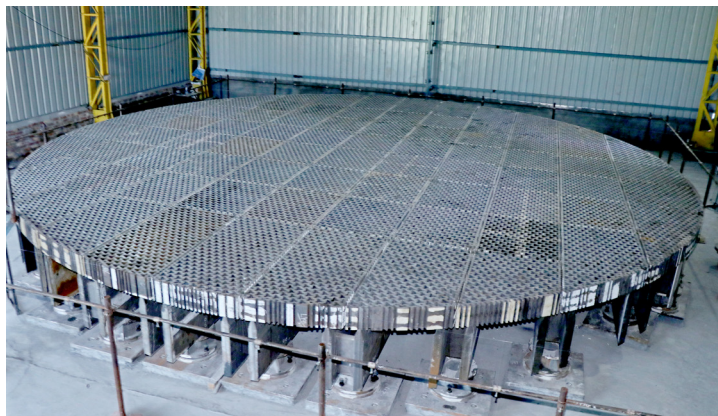
- Soda Ash
- Steel Plant
- Mining Sector
- Machine Tools
- Tool & Dies
- Cement
- Pump & Compressor
- Power
- Paper
- Chemical & Dye Stuff

Isgec is the premier manufacturer of high-quality grey, ductile, and alloy iron castings, with a modern pattern shop and in-house machining equipped with in-house testing and scanning facility. Our expertise lies in melt metallurgy, precise pattern design, efficient processes, and consistent manufacturing protocols, with a steadfast dedication to quality.

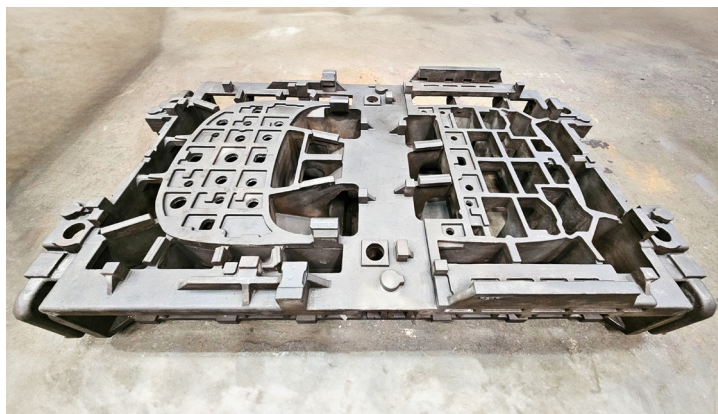
We supply castings weighing up to 25 T in grey and alloy iron and 15 T in ductile iron. Our superior cast iron products are tailored to meet diverse specifications, ensuring customer satisfaction and excellence in all our projects.



Carbonation Towers supplied to a soda ash plant.



Checker Support Assembly for blast furnace of steel plants.



Dual Hood Panel Stamping Die.



Isgec is India's largest manufacturer of soda ash & full mould castings.

Liquified Gas Containers

Since 1964, Isgec has been a pioneer in packaging solutions for the transport of liquefiable gases, including chlorine, sulphur dioxide, ammonia, various types of refrigerant, and chemical gases.

Safety is a priority. Our tonner prototypes are checked using design tools like Finite Element Analysis (FEA) and rigorous testing such as strain gauging and 6 m height drop tests to simulate any potential stresses and leakages.

Isgec is the only company in the world that manufactures seven tonner models, enabling us to meet country specific regulations and various design codes and serve clients across the globe.



Ammonia Gas Ton Containers.



Ton Container manufacturing shop.



Ethyl Chloride Gas Ton Containers.

Industries we cater to

- Chlor Alkali (Caustic Soda & Chlorine producers)
- Paper & Pulp
- Water Treatment
- Refrigerant Gases
- Ammonia

Gases we handle

- Sulfur Dioxide
- Difluoromethane
- Dimethylamine
- Ethylene Chloride
- Ethyl Chloride
- Ethylene Oxide
- Freon
- Methyl Chloride
- Monomethylamine
- Hydrogen Fluoride
- Methyl Amine
- Vinyl Chloride
- Monochloride - Monobromo - Difluoromethane
- Methyl Bromide
- Tri Methylamine
- Hydrogen Fluoride
- Propane
- Butane
- Isobutane
- Pentanes
- Anhydrous Dimethylamine
- Anhydrous Trimethylamine
- Anhydrous Ammonia



We have successfully supplied over 250,000 gas tonners, solidifying our position as the world's largest manufacturer of liquefied gas containers.

Boiler Pressure Parts

Key products

- Boilers & Pressure Parts
- Modular Assemblies for Boiler Parts — Economiser, Super Heater, Convection Cage, Water Walls, Air Pre-Heaters
- Harp Assemblies for Waste Heat Boilers and Heat Recovery Steam Generation (HRSG) Boiler
- Coil & Panel with Inconel Weld Overlay
- Steam Drums
- Cooling Stacks for Steel Plants
- Convection Module for Waste Heat Recovery Units

Industries we cater to

- Refineries
- Waste-to-Energy
- Biomass
- Sugar
- Paper & Pulp
- Distillery
- Power
- Mining & Steel
- Chemicals
- Cement

Isgec's Boiler pressure parts manufacturing is globally renowned for its production quality. Our cutting-edge semi-automatic shops feature advanced equipment, including automatic straight tube welding, real-time radiography, a dual radius and dual direction system bender, an 8-head SAW panel welding machine, and a precision panel bending machine.

We manufacture boiler pressure parts to EN Standards, ASME Codes, IBR and various other international codes and standards.



Waste Heat Boiler Assembly.



Superheater Assembly for waste-to-energy.



Internationally, we stand out as one of the select fabricators that provide inconel 625 & inconel 825, weld overlay solution for water wall panels through the application of cold metal transfer technology.



Cooling Stack Assembly.

● Prefabricated Piping Spools

We deliver precision-engineered prefabricated pipe spools driven by our expertise and state-of-the-art manufacturing facilities.

Our specialised pipe spooling shops have a total installed capacity of 600,000 inches diameter per year and can deliver pipe spools in line with IBR, ASME, and EN standards.



Pipe Spool.



Clad Pipe Spool.



Ring Header.

Key products

- Prefabricated Piping Spools
- Induction Bends
- Ring Headers up-to 6.5 m (dia) for sizes up-to 24" x 60 mm thick
- Jacketed Piping

Industries we cater to

- Refineries
- Waste-to-Energy
- Biomass
- Petrochemical
- Oil & Gas
- Fertiliser
- Paper & Pulp
- Nuclear
- Distillery
- Power
- Mining & Steel
- Chemicals



Did you know?

We are a one-stop solution for customers' prefabricated spooling needs, including value-added services like spool engineering. We have catered to various materials of construction, including critical ones like P91, SS, duplex, & inconel.

Process Skids & Modules

Key products

- Process Skids & Modules
 - Pre-Assembled Units (PAU)
 - Pre-Assembled Racks (PAR)
- Valve Skids

Industries we cater to

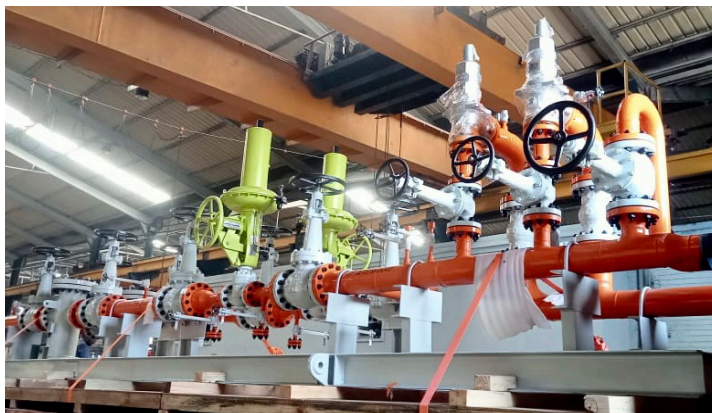
- Refineries
- Desalination
- Renewables
 - Waste-to-Energy
 - Sustainable Aviation Fuel
 - Ethanol
 - Plastic Recycling
 - Hydrogen
- Power
- Oil & Gas
- Petrochemical
- Fertiliser

Isgec's modular skids leverage its extensive engineering expertise to deliver complete solutions, encompassing detailed engineering, procurement, fabrication, and shop assembly.

Our top-of-the-line skids and modules, tailored for the process industry, guarantee shorter project cycles, improved safety, and minimised site work, ultimately boosting our clients' bottom lines.



Pressure Swing Adsorber (PSA) Unit Skid.

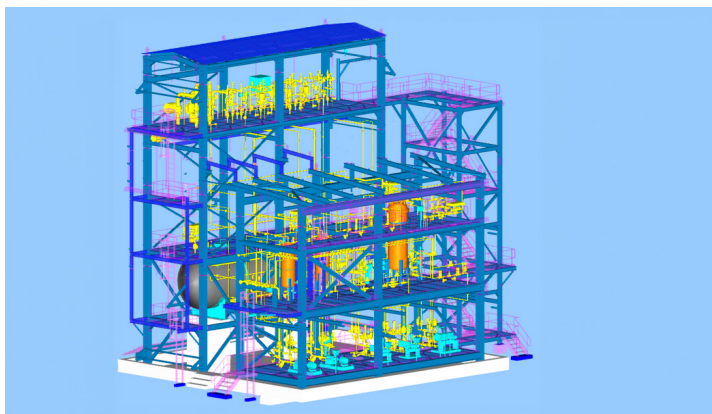


Common Gas Skid.



Did you know?

We can integrate large dimension process skids & modules at our coastal facility and ship them to different parts of the world through our RO-RO jetty.



TEA Skid for polypropylene plant.

Contract Manufacturing

We use our expertise and experience in fabrication, machining, assembly, and engineering to manufacture built-to-print and built-to-specification equipment for a wide range of sectors.

Our team of highly skilled engineers is supported by state-of-the-art facilities, including a battery of 16 horizontal boring machines, a 7-axis CNC plano-miller, a 200 MT single-piece lifting capacity, and a crane hook with a 21 M assembly height.



Caster Segment for steel sector.



Drive and Tipping Station.



Pelletizing Disc for steel sector.

Key products

- Linz-Donawitz Convertor (Basic Oxygen Furnace)
- Hot Metal Ladle Transfer Car
- Tundish
- Slab Caster Segments
- Drive & Tipping Station
- Pelletizing Disc
- Main Inlet Hydro Valve
- Stator Frame
- Hybrid Casings
- High Wall Mining Equipment
- Mounting Body for Towed Gun

Industries we cater to

- Steel
- Defence
- Mining
- Power
- Medical Equipment
- Cement
- Space
- Nuclear
- Railways
- Sugar



Did you know?

We are one of the first Indian companies to manufacture linz-donawitz converters, hitherto imported, for steel plants, contributing to the Make in India initiative.

02

Industrial Projects

Pg. 30

Boilers

Pg. 31

Power Plants

Pg. 32

Sugar Plants

Pg. 33

Bioenergy (Distillery &
Compressed Biogas)

Pg. 34

Emission Control Solutions

Pg. 35

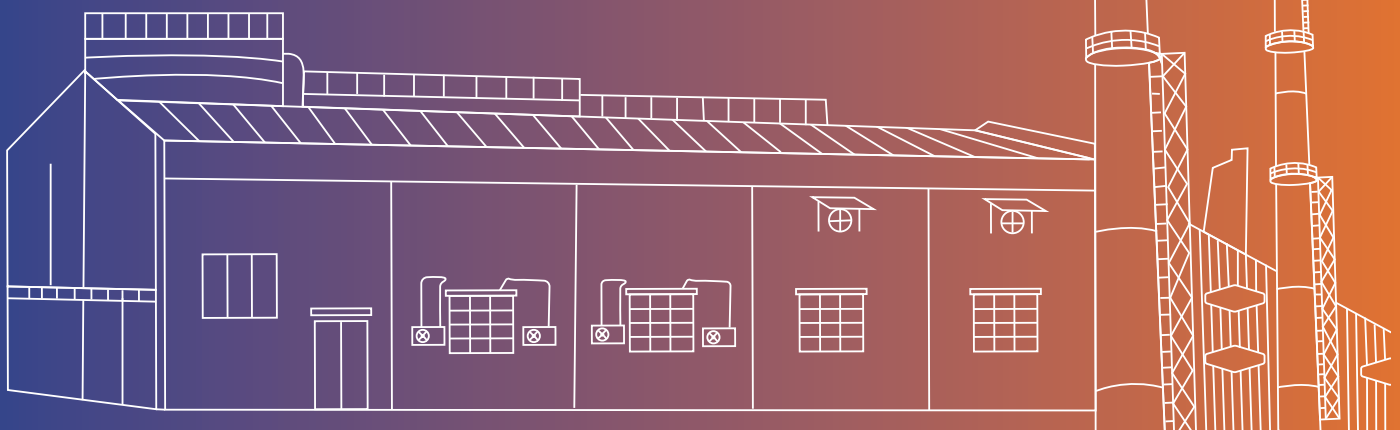
Material Handling

Pg. 36

Railway Projects

Pg. 36

Process Plants



Boilers

Isgec is a leading company in the boiler market, having installed over 950+ high-pressure and high-capacity boilers across many industries. With all our boiler pressure parts manufactured in-house, we offer our clients world-class quality at competitive pricing.

Through our extensive research and development, we have also accrued multiple patents, including feed and tube leakage detection systems, giving our clients exclusive access to technologies that boost operational efficiency.

Isgec is currently the most prominent global supplier of biomass-fired boilers, with 400+ biomass boilers installed across 50 countries, reaffirming our commitment to green energy.



Reheat type Cogeneration Multi Fuel Fired Circulating Fluidised Bed Combustion (CFBC) Boiler, designed for six different operating conditions of process steam and turbine.



Heat Recovery Steam Generators (HRSG) Boilers for a fertiliser plant in India.



Reciprocating Grate Boiler for burning empty fruit bunch (bulky fuel with high alkali, chlorine, and oil content) for a plant in Thailand.

Key products

- Bagasse & Biomass Boilers
- Waste-to-Energy Boilers for burning MSW/RDF/Paddy Straw (Paddy Straw under partnership with BWE, Denmark)
- Circulating Fluidised Bed Combustion Boilers (under license from Sumitomo SHI FW, Japan)
- Oil & Gas Fired Boilers (for shop assembled, licensed from Wood PLC, Spain)
- Incineration Boilers
- Waste Heat Recovery Boilers
- Heat Recovery Steam Generation (under license from NeM, Netherlands)
- Flue Gas Coolers
- Atmospheric/Bubbling Fluidised Bed Combustion (AFBC) Boilers
- **Services**
 - Plant Life Cycle Solutions
 - Operation & Maintenance
 - Retrofit & Modernisation
 - RLA Study
 - Spares



Isgec is India's largest supplier of both environment-friendly circulating fluidised bed combustion boilers (CFBC) & high pressure (125 kg/cm²) grate boilers for the sugar industry.



Did you know?

Isgec world class biomass fired boilers uses different types of agro waste biomass fuels & reduces carbon footprint. Thus, every 75 TPH biomass fired boiler reduces CO₂ emissions by 15,000 tons to 75,000 tons annually depending upon type of biomass.

Power Plants

In-house solutions

- Boilers
- Pollution Control Equipment
- Fuel Handling System
- Electrical
- Control & Instrumentation
- Water Solutions

Industries we cater to

- Cement
- Steel & Mining
- Sugar
- Distillery
- Chemical
- Sponge Iron
- Paper
- Textile
- Power
- Metal
- Pharma
- Petrochemicals

Isgec is a trusted one stop solution provider for independent power plants (IPPs), captive power plants, and co-generation applications. Isgec's expertise as an OEM for critical equipment—boilers, pollution control, and fuel handling—supplemented by in-house design, manufacturing and robust industrial control systems guarantees our clients reliable power with minimal lifecycle costs. We take single-point responsibility for our projects, from concept to commissioning, making Isgec the top choice for supplying power plants.



30 MW Captive Power Plant with Circulating Fluidised Bed Combustion Boiler on turnkey basis.



One of the world's largest Cement Waste Heat Recovery Boiler generating 34.5 MW power from a single cement line.



Paddy straw fired high pressure and high temperature water cooled Vibrating Grate Boiler, which reduces 75,000 tons of CO₂ emission by preventing stubble burning.



We have supplied 80+ power plants on an EPC basis.

Sugar Plants

Isgec is a global leader in turnkey sugar plant and machinery, providing comprehensive solutions for cane and beet based plants ranging from 500 to 24,000 TCD.

We excel in modernisation, expansion, and efficiency improvement. Our innovative solutions featuring low steam and low power consumption and easy maintenance include 13 patented designs, like falling filmevaporator distributor, tubeless pan calandria, and a four roll sugarcane crushing mill scrapper.

Moreover, we offer a range of automation solutions, including models with built-in artificial intelligence, allowing customers to optimise their plant operation and equipment efficiency with minimum workforce.



7,500 TCD integrated Sugar Complex in North India with 26% process steam consumption on cane.



2,500 TPD Standalone Port-Based Sugar Refinery including 12 MW power in Saudi Arabia.



45\"X 90\" size mill-Casting, Machining and Assembly done at Isgec workshop.



Key products

- Complete Sugarcane Plant
 - Raw Sugar
 - Brown Sugar
 - Plantation White Sugar (Double Sulphitation)
 - Refined Sugar (EU 1, EU 2, EU 3)
 - Liquid Sugar
 - Pharmaceutical Sugar
 - Demerara Sugar
- Complete Sugar Beet based Plant
 - Raw Sugar
 - Brown Sugar
 - Refined Sugar (EU 1, EU 2, EU 3)
 - Liquid Sugar
 - Pharmaceutical Sugar
- Artificial Intelligence (AI) Systems in Mills, FFE, Batch Pans, Vertical Continuous Pans (VCP)
- Sugar Refinery (Backend & Standalone) with Ion Exchange/ GAC/PAC/Decolourisations Process Optimisation
- Diffuser & Mill Plants for juice extraction
- Energy Saving Equipment for steam saving & power saving
- **Services**
 - Spares & Retrofitting
 - Operation & Maintenance of Sugar, Co-generation Plant
 - Feasibility Study of Plant for Energy, & Water optimisation



Did you know?

Isgec is the world's largest sugar plant supplier. We have installed over 235 complete sugar plants, including major project expansions, 840 cane crushing mills, & machinery in all 51 major cane-growing countries.

Bioenergy (Distillery & Compressed Biogas)

Key products

- Complete Distillery Plant (Syrup/ Molasses/ Grain/ Cassava/ Sweet Sorghum/ Napier Grass)
- 1G Ethanol/ENA Plants
- Ethyl Acetate Plant
- Pharmaceutical Ethanol & ENA Plant
- Advanced Bio Fuel 2G
- Compressed Bio Gas (Bio CNG)
- **Services**
 - Spares & Retrofitting
 - Operation & Maintenance of Distillery & CBG Plant
 - Feasibility Study of Plant for energy, water optimisation

Feedstocks we handle for Distillery

- C Heavy Molasses
- B Heavy Molasses
- Sugar Syrup/Sugar Juice
- Raw sugar to Ethanol
- Broken rice
- Potato
- Maize/Corn
- Tapioca/Cassava
- Napier Grass
- Barley
- Millets



Isgec is the only Indian company to offer turnkey solution for distillery plants with our own boiler & power plant.



Did you know?

Isgec is one of the only Indian companies which has executed a single unit 500 KLPD multi-feed Distillery Plant for production of Ethanol & ENA on sugar syrup, molasses & food grain.

Isgec specialises in supplying turnkey distillery plants with zero liquid discharge for the production of ethanol plants and extra neutral alcohol.

Our energy efficient plants are designed to guarantee specific steam consumptions for different feed stocks: syrup—2.2 kg/ltr, 'B' heavy—2.5 kg/ltr, 'C' molasses—3.0 kg/ltr, and grain—3.2 kg/ltr. Clients also have the opportunity to further reduce their steam consumption by opting for Isgec's cutting edge multi vapour recompression (MVR) technology.

We also supply highly efficient compressed biogas (CBG) plants with anaerobic micro organism and innovative bio reactors for all feedstocks, such as press mud cake (PMC), spentwash, paddy straw, etc., yielding a high gas output with minimum discharge.



120 KLPD Ethanol Plant on multi-feedstock B heavy/ food grain in North India.



160 KLPD multi-feed Ethanol Plant with 48 TPH Slop Fired Incineration Boiler and 5.6 MW Power Plant.



175 KLPD multi-feed Ethanol Plant with 44 TPH Slop Fired Incineration Boiler and 5 MW Power Plant in North India running on fermentation efficiency 93%+ and 115% capacity utilisation.

Emission Control Solutions

We deliver concept to commissioning emission control solutions that effectively reduce air pollution by minimising harmful particulate and gaseous emissions. Our solutions help industries meet region-specific regulatory compliances and make their operations more sustainable.

Additionally, we offer turnkey emission control solutions through our joint venture company, Isgec Redecam Enviro Solutions Pvt. Ltd., tailored to capture specific pollutants in various industrial applications.

We have established strategic collaborations with leading global technology providers, such as Babcock Power Environmental Inc., USA (for Wet FGD > 100 MWe); Sumitomo SHI FW Energia Oy., Finland (for Semi-Dry FGD > 50 MWe); UCC Environmental, USA (for DSI Systems); Fuel Tech Inc., USA (for SCR, SNCR, and FGC); and BHI FW Corp., USA (for DeNOx Combustion Modifications), enabling us to offer cutting-edge technology.



First Semi Dry FGD based on Circulating Fluidised Bed Scrubber Technology commissioned in India for a 150 MW thermal power unit.



First to commission the largest Wet FGD in India for an 800 MW thermal power unit which will reduce more than 96% of the SO₂ emissions generated by the unit, thereby producing saleable gypsum as by-product.

Key products & technologies

- Flue Gas Desulphurisation (FGD) Systems
 - Wet Flue Gas Desulphurisation (WFGD)
 - Semi Dry Flue Gas Desulphurisation (SDFGD)
 - Dry Sorbent Injection (DSI)
 - Tail Gas Desulphurisation (TGD)
- NOx Emission Reduction Systems
 - Selective Non-Catalytic Reduction (SNCR)
 - Selective Catalytic Reduction (SCR)
- Particulate Matter Control Systems
 - Electrostatic Precipitators (ESPs) including Hot & Wet ESPs
 - Bag Filters
 - Hybrid Filters
 - Flue Gas Conditioning for ESP Performance Improvement
- **Services**
 - Renovation & Modernisation (R&M)
 - Combustion Modifications (TLN Retrofit) for NOx control
 - Operation & Maintenance (O&M)
 - Spares

Industries we cater to

- Power
- Ferrous (Steel, Iron etc.)
- Non Ferrous (Aluminium, Zinc, Copper etc.)
- Cement
- Refinery & Petrochemicals
- Chemicals
- Minerals & Mining
- Sugar & Distilleries
- Carbon Black
- Paper & Pulp
- Agriculture (Fertiliser)
- Textile
- Plywood, Particle Board & Laminates



Did you know?

Isgec is India's only EPC company which provides the full range of SO_x control technology solutions.

Material Handling

Key products

- Trough/Belt Conveying Systems
- Pipe Conveyor System
- Port/Cargo Container Cranes
- Ship Unloader/Loader
- Stacker Reclaimer

Industries we cater to

- Industrial Plants (Metallurgical Plants)
- Ports
- Mines
- Stockyards
- Power Stations
- Cement Works
- Sugar Plants
- Co-Generation Power Plants

Isgec supplies a range of material handling solutions, from individual machines to complete facilities for industrial plants, ports, mines, and stockyards. Partnering with global technology providers, we deliver cutting-edge conveyor systems for the eco-friendly transport of bulk materials like coal, gypsum, limestone, etc.

Our in-house manufacturing facilities in Dahej, Gujarat, enable us to deliver the best-quality cost effective sustainable solutions to our customers.



Ship Unloaders supplied to a port in eastern coast of India with a capacity of 2,750 TPH and a height of 60 m.



Stacker cum Bucket Wheel Reclaimer with stacking capacity of 6050 TPH, reclaiming capacity of 4500 TPH and boom length of 50 m.



We are the only Indian company that has manufactured an electrically operated rubber tyre container gantry crane with a 41 T capacity & a ship unloader with a capacity of 2,750 TPH & a height of 60 meters.



16 km Pipe and Trough Conveyor System for transportation of coal from three mines to two thermal power plants crossing two rivers and several railway lines, in Western India.

● Railway Projects

Isgec excels in specialised railway projects, including constructing railway coach factories, workshops, and metro depots. We handle everything from plant machinery and mechanical works to electrification and track linking, ensuring comprehensive railway and metro infrastructure solutions.



Axle Forging Plant for a rail wheel factory in Bangalore. The plant has a capacity to manufacture 108,000 axles per annum.

Project scope

- Railway Coach Factories/ Workshops/Sheds
- Metro Depot Construction
- Overhead Electrification Works (OHE)



Integrated Rail Coach Factories for the Indian Railways. These workshops are being used to manufacture and maintain passenger coaches.

● Process Plants

Isgec offers turnkey solutions to the process industry as an extension of our high-quality process plant equipment manufacturing. We are geared to handle complex and specialised hydrocarbon projects, covering design, mechanical, electrical, and instrumentation engineering and construction. Isgec's strategic tie-ups with reputed process licensors and technology partners and our approvals from major engineering consultants have enabled us to emerge as a significant player in this segment.



Reactor and Product Purge Bin Package for a large petrochemical complex in India. Isgec deployed a 1,600 ton crane for the erection of this equipment.

Project scope

- Complete Sulphuric Acid Plants
- Off-site Utilities for Process Plants
- Flare System for Refineries
- Bio Methanisation Plants
- Balance of Plant for Process Plants

03

Saraswati Sugar Mills Ltd.

Pg. 38
Refined Sugar

Pg. 39
Ethanol



● Refined Sugar

The premium double-refined sugar made at Saraswati Sugar Mills Ltd.'s 10,000 TPD refined sugar plant is renowned for its exceptional quality, uniform grain size, and sparkling white color. Our sugar crystals are free of added sulphur, untouched by hand, and of EU 1 grade sugar of 15 IU, highlighting our commitment to serving our customers nothing but the best.



OUR COMMUNITY OF FARMERS

Farmers are the cornerstone of our organisation. We procure sugarcane from over 20,000 growers in 650 villages in a command area spread across 90,000 acres.

Our cane development team supports farmers every step of the way: sourcing agrochemicals, educating them on cutting-edge farming practices, giving them access to mechanical equipment, and providing them with heat-treated seeds of high-yielding varieties to boost their crop productivity and earnings.



OUR COMMITMENT TO SUSTAINABILITY

- Zero groundwater consumption
- Zero discharge of brine wastewater
- Raw water & surface water harvesting



No Added
Sulphur



Ultra
Pure



Double
Refined



No Acid



Defeco Remelt
Phosphotation + Ion
Exchange Resin



European
Union
Standard



Food Safety
Certificate
22000



Environment
Friendly



FSSAI
Certified



Ethanol

Features:

- Capacity 160 KLPD
- Fermentation efficiency > 92.25%
- Distillation efficiency > 99%
- 150+ days continuous operation of Vinnase-Fired Boilers

Saraswati Sugar Mills Ltd.'s state-of-the-art distillery and vinasse-fired boiler are end-to-end engineered, designed, and commissioned by Isgec. Our world-class equipment and exceptional team have helped us redefine the industry's efficiency and operation benchmarks. Ethanol from our distillery is used for petrol blending, in line with the Government of India's Ethanol Programme, which has three objectives: transitioning to renewable fuels, reducing India's carbon footprint, and substituting imports. The current Ethanol Blending Programme (EBP) targets 20% ethanol blending by 2025, propelling the industry forward.

OUR COMMITMENT TO SUSTAINABILITY

- Zero liquid discharge
- Over 45+ tons of carbon dioxide capture per day

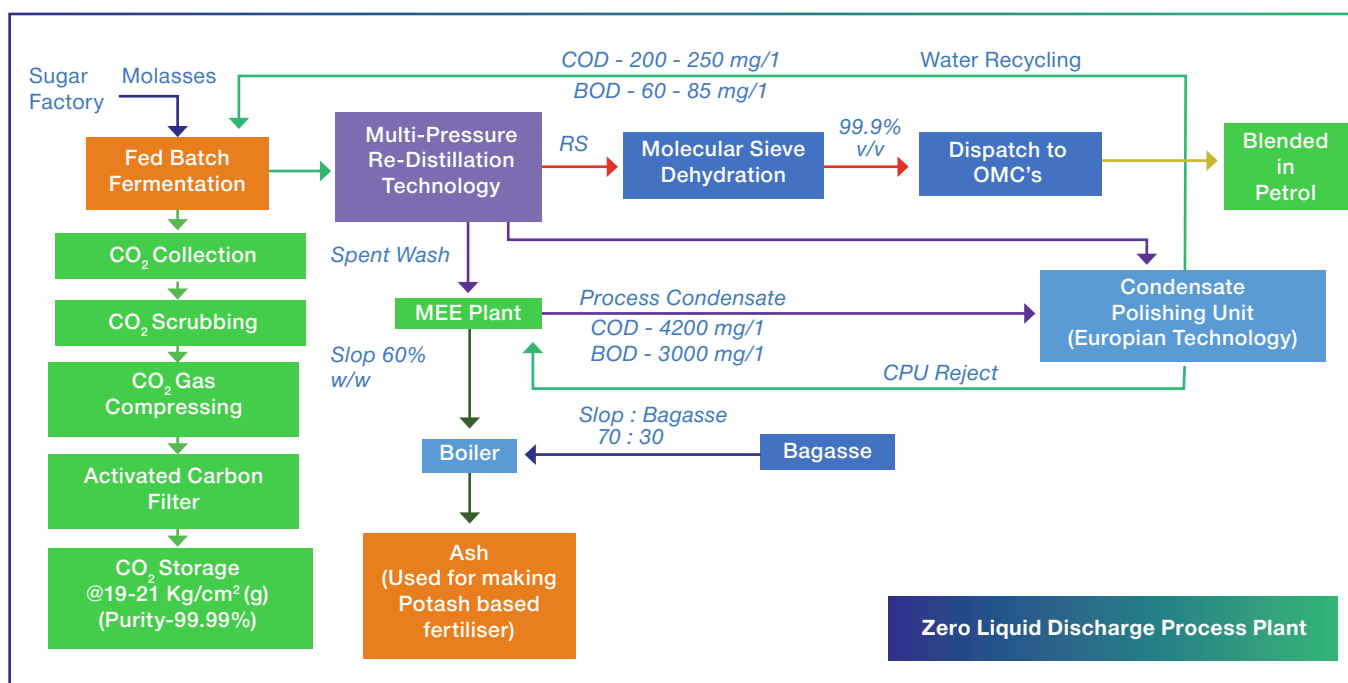


Did you know?

Burning 1L of ethanol generates approximately 34% fewer greenhouse gas (GHG) emissions compared to burning 1L of petrol.



Saraswati Sugar Mills Ltd.'s 160 KLPD Distillery, commissioned by Isgec in 2021.



● We place utmost value on the Environment

“

The importance of safety is engrained in Isgec's workforce- safety in factories, safety in offices, safety at sites, & safety in what we deliver.

Our role in protecting the environment

At Isgec (EHS Certified ISO-14001), we are committed to environmental sustainability. We have a three-pronged approach to achieving our goal.

First, we minimise our use of natural resources- we are constructing our new corporate office to meet the environmental gold standard.

Second, we actively search for more sustainable avenues to fulfil our existing resource requirements. This includes a transition towards renewable fuels, installation of solar panels, and rainwater harvesting systems within our premises.

Third, we ensure that all industrial discharge and emissions are treated with state-of-the-art technology. To this end, we have installed bag filters, wet scrubbers, and in-house water treatment plants.

And the steps we take

- Solar rooftop installations at all plants.
- Biogenic CO₂ capture and storage/shipment.
- Recycling of water in hydro-testing and cooling towers.
- Removal of water-cooled air compressors.
- Reduction of water usage in cooling towers with zero cut feeder from UHBVN.
- Use of bagasse and slop as boiler feedstock in sugar factories and distilleries.

The impact we create

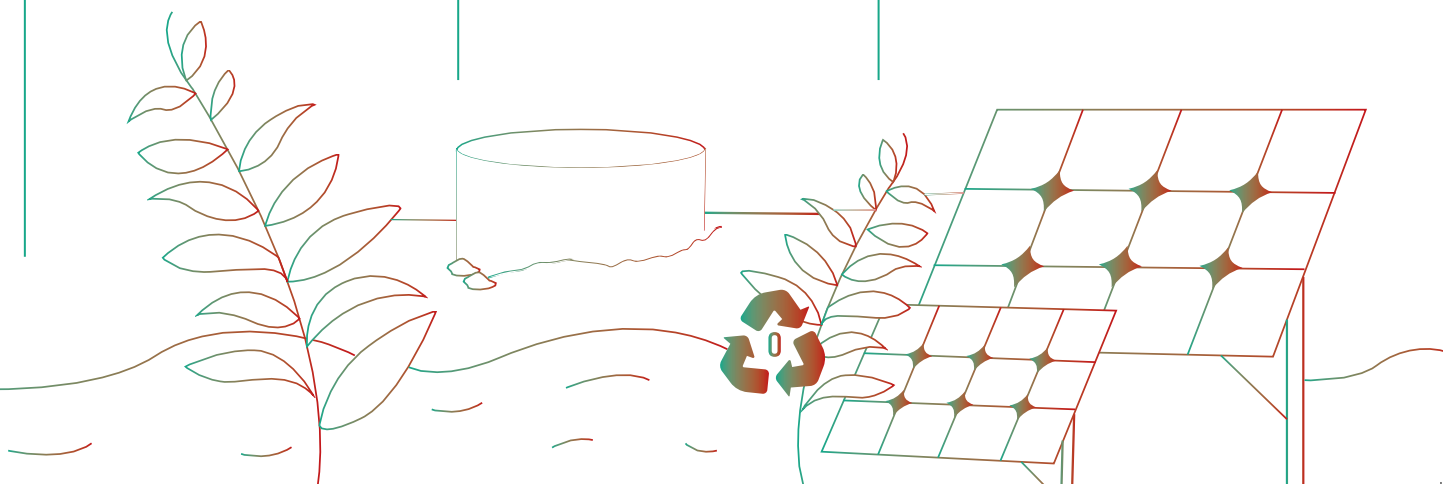
Capturing and storing 45+ tons of biogenic CO₂ during distillery operation.

Zero liquid discharge in distillery and over 1,800 KL of water recycling per day.

60 million litres of water saved through rain water harvesting systems in Isgec plants (FY 2023-24).

Groundwater extraction reduced by 25% since 2009.

2,066 tons of coal usage neutralised through solar power systems installed in Isgec plants (FY 2023-24).



We place utmost value on **Social Responsibility**

Cultivating a culture of excellence

At Isgec, we have built a diverse and inclusive workforce. Employees work in a stimulating environment to formulate technology-driven sustainable solutions for the challenging industrial problems unfolding around them.

Isgec's centres of excellence are designed to equip the next generation of leaders with skills to accelerate their career growth. We offer a comprehensive job rotation program and delegate critical assignments, giving employees hands-on exposure to different facets of business problem-solving, supplemented by training modules tailored for functional teams that encompass strategic decision-making, operational excellence, sustainable growth, AI, ML integration, and more.

Safety

We follow the most stringent safety standards in our manufacturing units and sites and extend safety training across the supply chain to our vendors and contractors.

Work Environment

We foster a safe, supportive, and engaging work environment championing inclusivity, equality, and respect.

Diversity

Actively promoting diversity within our workforce.

Operational Transparency

Ensure transparency in supply chains and promote economic growth in communities.

Skill Development

We provide employees with access to training modules, facilitate job rotation, and expose them to critical assignments to support their career growth.

Mentorship

Recruits are paired with mentors who can assist them in seamlessly transitioning into our organisation.

● We place utmost value on Governance

Our take on governance

Isgec has always worked to build trust with shareholders, employees, customers, suppliers, and other stakeholders through good governance principles. By consistently enhancing and retaining stakeholder trust, Isgec fosters strong, reliable relationships that underpin its commitment to excellence and integrity.

With a diverse board composed of experienced professionals and operational leaders, we ensure timely disclosures by consistently sharing information with the stock exchange and shareholders and strictly adhering to statutory and regulatory compliance across all our operations.



“

We create a space where people are stimulated by their work, are given avenues for career growth, & are encouraged to think out of the box.



● The initiatives that keep us going

Corporate Social Responsibility

“

At Isgec, we invest in our country & our planet's future, making Environment and Education the core of our corporate social responsibility.

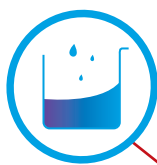
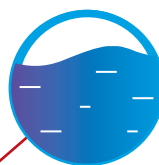
We care for the environment

Isgec champions several schemes for environmental conservation. Over the past five years, we have placed over 132 solar power plants and installed 93 rainwater harvesting systems—collection pits, drainage pipes, and floor pavers. Additionally, we have constructed 47 borewells in low-lying regions around Yamunanagar to effectively address waterlogging issues that adversely impact crop stand. These borewells will expedite water drainage in the fields, safeguarding crops from torrential rains and floods.

Our strides in education

Isgec is dedicated to uplifting the communities around it. Today, we serve over 243 government schools in the Yamunanagar region—renovating ten buildings, constructing modern toilets for girls, and providing water coolers, green boards, and computers—to foster a conducive learning environment and reduce the female dropout rate in high schools. We also partner with Nai Disha to provide vocational training, technical literacy, and open schooling opportunities to children from low income families in the National Capital Region.



93rainwater harvesting
systems**134 million litres
of water
conserved**by our rainwater
harvesting systems
(FY 2023-24)**132**solar power systems
installed**581 tons of coal
consumption
prevented**by our solar panels
(FY 2023-24)**47**borewells constructed
in low-lying regions
around Yamunanagar,
Haryana**243**

schools renovated

**8**outdoor gymnasiums
constructed**“**

A prerequisite for
sustainable economic
development is that
the nation invests in
building its human
capital & safeguarding
the environment.

• Our Joint Ventures & Subsidiaries

100%

90%



CAVITE BIOFUEL PRODUCERS INC.

Cavite Biofuel Producers Inc., Philippines (2019)

Step-down subsidiary in Cavite, Philippines, producing 130 KLPD of ethanol from sugarcane juice and molasses.



Saraswati Sugar Mills Ltd. (1933)

Wholly owned subsidiary in Yamunanagar, India, producing refined sugar and ethanol.



EAGLE PRESS
& Equipment Co. Ltd.

Eagle Press & Equipment Co. Ltd. (2018)

Wholly owned subsidiary in Windsor, Canada, for manufacturing mechanical presses for the North American market.



We partner with world-renowned, technology-driven companies to give our customers an expanded portfolio of cutting-edge products.

51%



Isgec Hitachi Zosen Ltd. (2012)

Joint venture with Hitachi Zosen Corporation Japan, based in Dahej, India, for manufacturing critical and heavy process equipment.



Isgec SFW Boilers Pvt. Ltd. (2015)

Joint venture with Sumitomo SHI FW Oy, Finland, for proposals and detailed engineering of Sumitomo SHI FW Oy's boilers worldwide.



Isgec Titan Metal Fabricators Pvt. Ltd. (2015)

Joint venture with Titan Metal Fabricators USA, based in Yamunanagar, India, for manufacturing corrosion-resistant process equipment using reactive metals and high nickel alloys.



Isgec Redecam Enviro Solutions Pvt. Ltd. (2017)

Joint venture with Redecam Group SpA Italy, for providing SOx and particulate matter emission control solutions like dry & semi-dry FGDs, bag filters, hybrid filters, and ESPs for steel, cement, biomass, waste-to-energy, and other industrial applications.







We strive for
a sustainable
future for all
our partners
& alliances.

● Sectors we Cater to



A. Automotive Industry

1. Iron Castings

- Tool & Die Castings

2. Presses

- Hydraulic Presses
- Mechanical Presses



B. Cement

1. Contract Manufacturing

- Gear Box Housing
- Raw Mill Stand

2. Emission Control Solutions

- Bag Filters

3. Power Plants

- Boilers
- Waste Heat Boilers

4. Steel Castings

- Bearing Block & Cap
- Girth Gear
- Grinding Table Casting
- Journal Head & Housing
- Kiln Tyre/Live Rings
- Thrust Roller



C. Chemicals

1. Boilers

- Fired & CFB Boilers
- Waste Heat Boilers

2. Iron Castings

- Cast Iron Carbonation Tower
- Castings for Pre-heater & condenser for Soda Ash
- Sulphonator Vessel for Dye Shift

3. Power Plants

4. Prefabricated Piping Spools

5. Process Equipment

- Columns
- Pressure Vessels
- Reactors
- Shell & Tube Heat Exchangers

6. Process Plants

7. Process Skids & Modules



D. Defence

1. Contract Manufacturing

- Components of Howitzer Guns
- Components of Under Water Platforms
- Mobile Missile Launchers
- Trestles for Shipyards



E. Distillery

1. Bioenergy (Distillery & Compressed Biogas)

- Ethanol Plants
- Ethyl Acetate Plant
- Extra Neutral Alcohol Plants (Portable)
- Pharma Grade Ethanol Plant



F. Fertilizers

1. Emission Control Solutions

- Bag Filters

2. Process Equipment

- Ammonia Converter
- Ammonia Converter Internals
- Carbamate Condensers
- HP Heat Exchangers
- HP Urea Strippers
- Methanator
- Shift Reactors
- Urea Hydrolyzers
- Waste Heat Boilers



G. Green Energy

1. Bioenergy (Distillery & Compressed Biogas)

- Compressed Biogas
- Distillery

2. Boilers

- Biomass Boilers

- Waste Heat Recovery Boilers

3. Process Equipment

- Ammonia Converters
- Internals
- Misc. Pressure Vessels & Shell & Tube Heat Exchangers
- Reactors



H. Hydro Power

1. Contract Manufacturing

- Butterfly Valves
- Castings Chequered Support Plate Assembly
- Cast Iron Castings for Ammonium Sulfate unit
- Nozzle & Diffuser Assembly
- Rotor Spiders
- Upper & Lower Brackets
- Valve Disc

2. Steel Castings

- BFW Door Trunnion Side
- Body Upstream & Downstream
- Francis Runner Band
- Francis Runner Blade
- Francis Runner Crown
- Guide Vane
- Hub Casting
- Kaplan Blade
- Kaplan Hub Casting
- Mono Block Francis & Pelton Runner
- Runner Band
- Runner Crown
- Spherical Valve Body
- Trunnion Valve Disc Hub
- Upstream Body
- Valve Body Hub
- Valve Disc



I. Mining

1. Contract Manufacturing

- Highwall Mounting Equipment

2. Iron Castings

- Support Roller Bearing Block Casting

3. Steel Castings

- Bracket Casting
- Centre Lip
- Cone Crusher Top & Bottom Shell
- Dipper Lip
- Head Centre
- Main Frame Casting for Crusher
- Mill Head for Ball Mills



J. Nuclear Power

1. Contract Manufacturing

- Calandria Vault Top Hatch
- Beam & Deck Plate Assembly

2. Process Equipment

- Pressure Vessels
- Shell & Tube Heat Exchangers



K. Oil & Gas

1. Prefabricated Piping Spools

2. Process Equipment

- Distillation Columns
- High Pressure & Low Pressure Separators
- Mercury Adsorbers
- Pressure Vessels
- Shell & Tube Heat Exchangers
- Slug Catchers

3. Process Skids & Modules



L. Oil Refinery & Petrochemicals

1. Boilers

- CFBC Boilers
- CO2 Boilers
- Oil & Gas Fired Boilers
- Package Boilers

2. Iron Castings

- Compressor Castings

3. Prefabricated Piping Spools

4. Process Equipment

- Distillation Columns
- H.P. Cold & Hot Separators
- Pressure Vessels
- Reactors
- Shell & Tube Heat Exchangers

- Breach Lock Closure Type
- Helical Heat Exchangers
- TEMA Type

5. Process Plants

6. Process Skids & Modules

7. Steel Castings

- Diffuser
- Impeller
- Pump Casing



M. Paper

1. AFBC, CFBC Boilers

2. Boiler Pressure Parts

3. Cast Iron

- Press Roll Assemblies



N. Ports

1. Material Handling

- Ship Loading & Unloading Systems



O. Railways

1. Railway Projects

- Coach Factories
- Metro Depots



P. Space

1. Contract Manufacturing

- Bowl Cleaning Machine
- Thrust Measurement System



Q. Steel

1. Contract Manufacturing

- Caster Segments
- Coiling Machine
- Continuous Caster
- Cooling Stacks
- Dewatering Drums

- Drive & Tipping Stations
- Laddle
- LD Converter
- Material Hopper
- Palletising Disc
- Transfer Cars
- Tundish
- Turret

2. Emission Control Solutions

- Bag Filters

3. Power Plants

- Boilers
- Waste Heat Boilers

4. Steel Castings

- Chocks
- Hopper
- Hot Coiler Drum
- Mill Housing



R. Sugar

1. Sugar Plants

- Back End Refinery
- Batch Vacuum Pans
- Cane Diffusers (in collaboration with Bosch Projects)
- Cane Mills
- Cane Preparatory Devices
- Falling Film Evaporators
- Horizontal Continuous Pan
- Juice & Syrup Clarification
- Juice Heaters
- Semi Kestner & Robert Type Evaporators
- Standalone Refinery
- Turnkey Plants
- Vertical Continuous Pan



S. Thermal Power

1. Boilers

- CFB & Fired Water Tube Boilers
- Water Treatment Plant

2. Boiler Pressure Parts

3. Contract Manufacturing

- End Shield
- Fabricated Steam Turbine Castings
- Outlet Valve
- Pulveriser Housing
- Stator Frame
- Steel Castings - Steam Turbine Casings

● Sectors we Cater to

- Wind Boxes

4. Emission Control Solutions

- Bag Filters
- Combustion Modification
- Dry Sorbent Injection Units
- Electrostatic Precipitators
- Wet Flue Gas Desulfurization Unit

5. Heat Recovery Steam Generators (HRGs)

6. Iron Castings

- Ductile Iron Bearing Housing Steam Turbine
- Ductile Iron Blade Carrier

7. Material Handling

- Ash Handling Plants
- Coal Grinding Mills
- Coal Handling Plants

8. Prefabricated Piping Spools

9. Power Plants

10. Process Equipment

- HP & LP Heaters
- Steam Surface Condensers

11. Process Skids & Modules

12. Steel Castings

- Bearing Pedestal
- Blade Carrier
- Compressor Cylinder
- Compressor Discharge Casing
- ESV & CV Casing
- ESV Body
- Exhaust Casing
- External Casing
- Front Casing
- HP/IP Inner & Outer Casing
- Inlet Casing
- IP Control Valve Body
- IP Inner & Outer Casing
- LP Casing
- Outer Casing (Barrel Type)
- Outer Casing with SVB
- Turbine Casing Casting
- Turbine Shell
- Valve Body



T. Waste-to-Energy

1. Boilers

- CFB & Incineration Boiler
- Waste-to-Energy Plants

2. Boiler Pressure Parts

3. Gas Cleaning Section

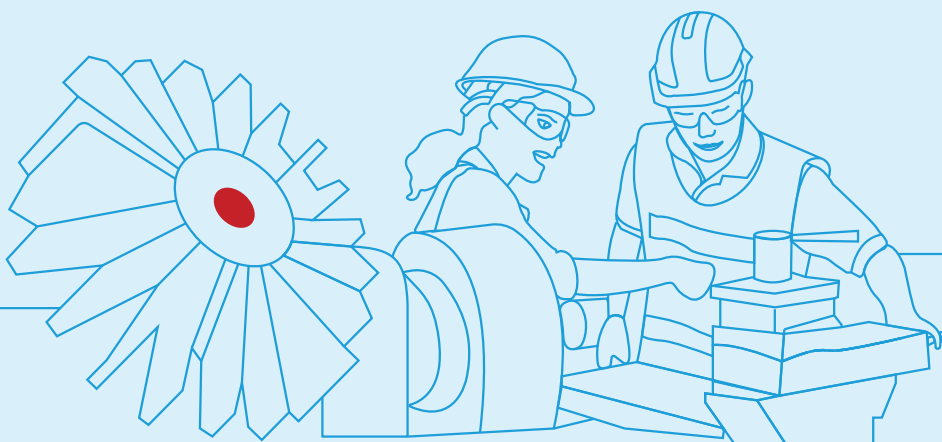
4. Material Handling



U. Whitegoods

1. Presses


- Mechanical Presses
- Press Brakes





“

Our company is structured to cater to an array of industries, ensuring that no cyclical disruption in any sector of the economy hampers Isgec's growth story.

An aerial photograph of a coastal industrial facility. In the foreground, two large, horizontal, cylindrical storage tanks are positioned on a concrete pier. A third similar tank is visible further back on the pier. The pier extends into a body of water. In the background, a long pier with several small boats is visible, along with a residential area and the ocean under a blue sky with scattered clouds.

BUILDING TOMORROW, TODAY

Engineering Solutions for a Sustainable Future

Isgec Heavy Engineering Ltd.

Head Office: A-4, Sector 24, Noida-201301, Uttar Pradesh, India

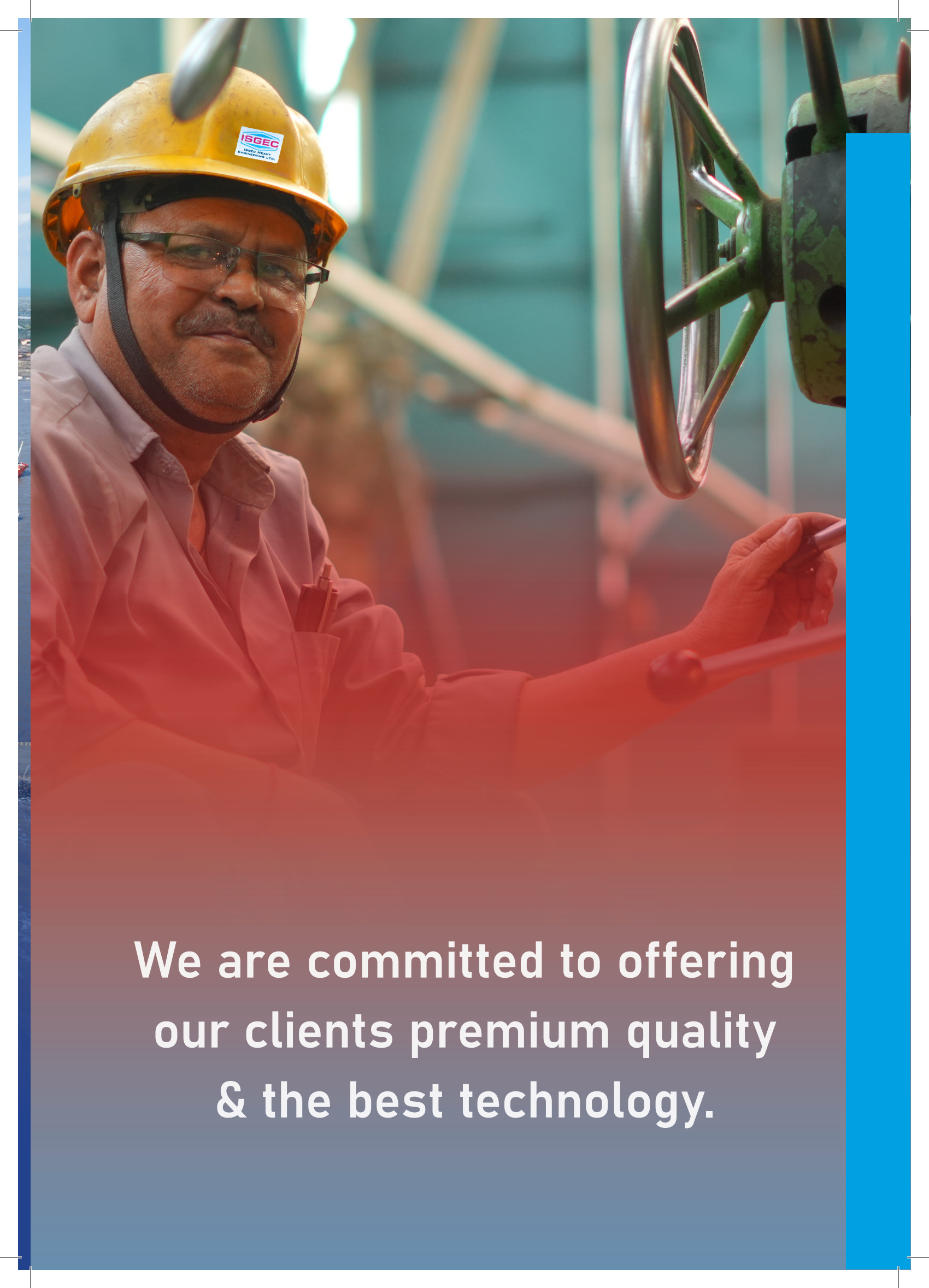
Website: www.isgec.com

Book Design & Photography

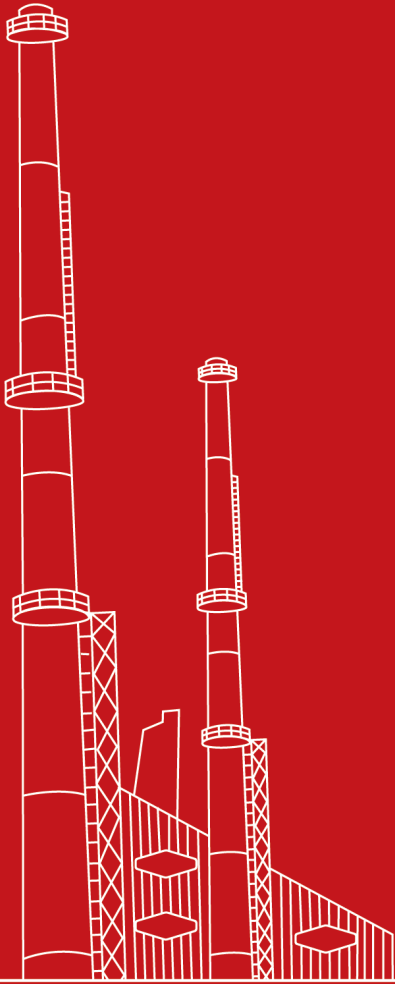
One Small Design Studio / www.onesmall.in

©Isgec, 2024

All rights reserved. No part of this document to be reproduced, in print or web, without prior written permission of the publisher.



**We are committed to offering
our clients premium quality
& the best technology.**



Scan here to know more
about us

